



FHC 120" Long Cladding for Windscreen/Smoke Baffle

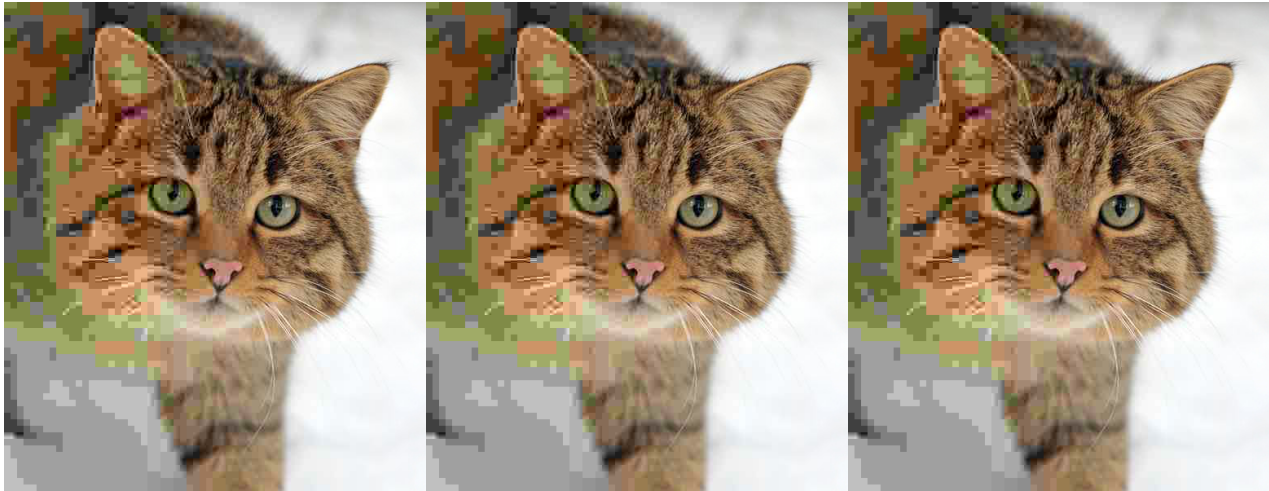
Item No. SBC1

Features, Advantages, and Benefits

- Cladding for Aluminum Smoke Baffle
- Available in Five Architectural Finishes
- Use S790 Silicone or CT040 Cladding Tape (Sold Separately)
- Cladding Sold In 120" Stock Lengths

- 2-3/4" tall
- Sold Individually
- Contact Us for Custom Requests

Description: <h2>Overview</h2><p>Aluminum Smoke Baffle Cladding can be attached to the SB12C10 smoke baffle extrusion with the S790 Silicone or CT040 Cladding Tape (sold separately). Cladding is available in five standard architectural finishes. Contact us for any custom requests. </p> <h2>Shipping and Ordering</h2><p>Case quantity order ship via common carrier (six per case, multiples of six only). Orders of 1 piece of cladding are only will call pick-up.</p> <p style=' margin: 0; line-height: 15px; '> WARNING:



derline;