



## **FHC Self-Closing Bi-Parting Window 0XX0 - 42" x 36" - 1/4" Tempered Glass**

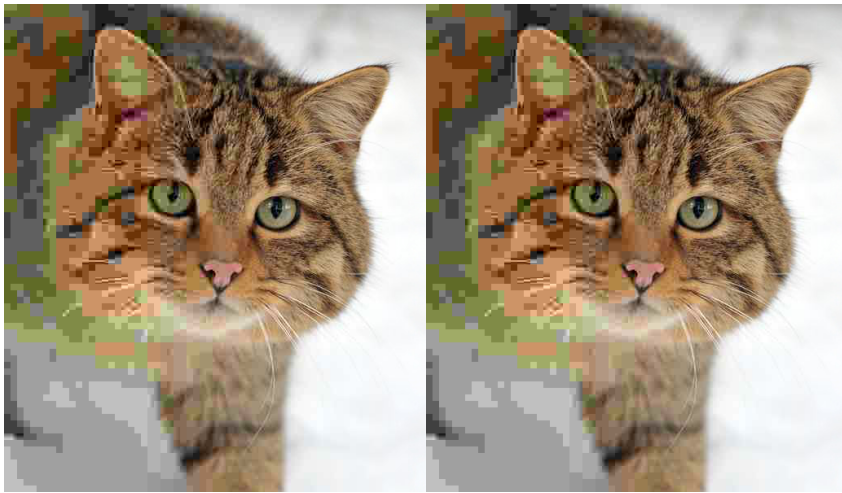
**Item No.** QSBPSC4236

### **Features, Advantages, and Benefits**

- Shipped Fully Assembled and Ready to Install
- Available with 1/4" Clear Tempered Safety Glass

- Weather-Resistant and Sealed to Protect from the Elements
- Dark Bronze or Clear Anodized Aluminum
- Corrosion-Resistant Material: Anodized Aluminum and #304-#3 Finish Stainless Steel
- Maximum Security Hook-Bolt Locks
- Automatically Locks Every Time the Door Closes to Prevent Outside Penetration
- Unit Size: 42" x 36"
- Service Opening: 14" x 28-1/2"
- Rough Opening: 42-3/8" x 36-3/8"
- F.O.B. Houston, TX

**Description:** <h2>Overview</h2><p>This transaction window has bi-parting, self-closing sliders that provide a service opening for the largest of products. Doors open manually from the middle eliminating the need to order right or left handed models.



used and passes all health code