



FHC Patriot Grande Series Adjustable Top Beveled Pivot Hinge

Item No. PATGS06

Features, Advantages, and Benefits

- Beveled Adjustable Top Header Mount HD Pivot Hinge
- Designed For 1/2" (12 mm) Tempered Glass
- Heavy Duty Design For Wider and Heavier Doors
- Self-Centering within 15 Degrees of Closing Position

- Commonly used in Residential Bath and Commercial Hotel Applications
- Designed for use With [AHK95](#) Header Only
- Many Popular Finishes to Select From

Description:

Gasket Specifications

For 1/2" (12 mm) Glass: Use One Thick Gasket On One Side and One Thin Gasket on the Other Side

Glass Instructions

Only use tempered safety glass. To prevent damage to the hinge finish during installation, do not use power tools when installing these hinges.

Overview

The Patriot Grande Series Pivot Hinge has a dual degree pivot pin. It comes factory set at 90 degrees for normal door closing applications. There is also a secondary setting on the hinge pivot pin that can be field adjusted to allow an additional 5 degrees of closing for jobs that require a firmer positive position against a jamb or seal.

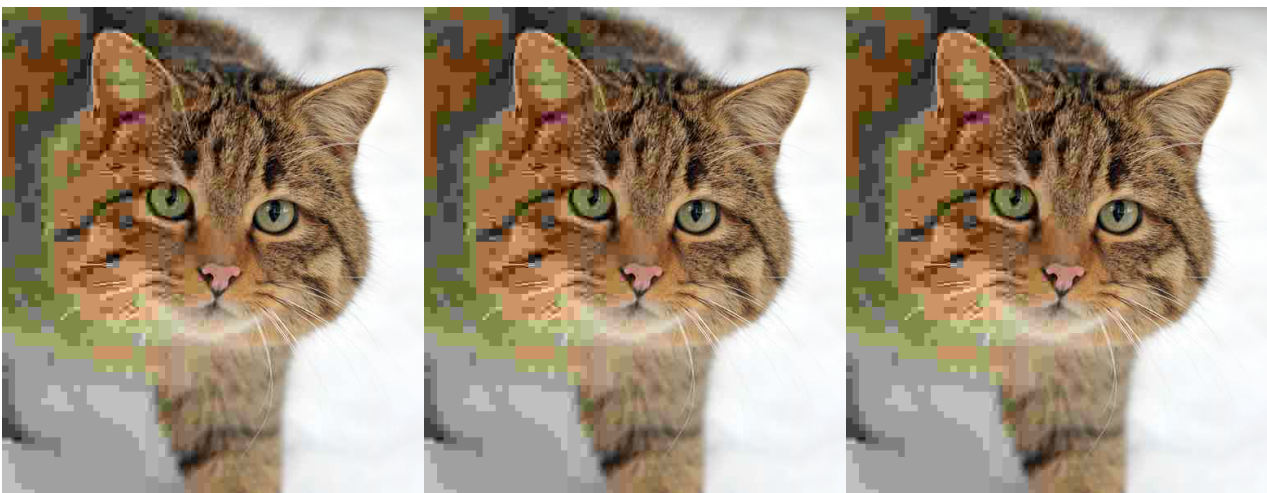
Care & Cleaning

Guidelines

For best results, keep the following recommendations in mind when caring for your FHC shower door hardware. Your shower door should be dried daily with a soft towel or cloth to ensure its original finish. Do not use harsh cleaners or chemicals on the hardware, as many of the components are coated with a clear lacquer that will become damaged beyond repair. Always test your cleaning solution in an inconspicuous area prior to cleaning the entire hardware surface. Wipe surfaces clean using a soft, dampened cloth or sponge, and rinse completely with warm water immediately after applying the cleaning solution. Use only small amounts of liquid, gentle, cleaner. Never use abrasive products, sponges, or wire scrub brushes while cleaning hardware.

Maintenance

FHC's hinges come factory greased for a silent, hassle-free experience. If there is any noticeable squeaking that occurs after installation it is recommended to apply a few drops of (3 in 1) multi-purpose oil to the hinge, at the nylon washer/pivot location. The lubricant will penetrate the hinge crevices, reducing friction, cleaning grime, and/or buildup. Spray lubricants are prohibited. If, for some reason, the hinge is disassembled during



ior
>