



## FHC Square 180 Degree Glass Clamp

**Item No.** CSN180

### **Features, Advantages, and Benefits**

- Square Profile, Radius Corner Glass Clamp
- Glass Fabrication May Be Required (See Template)
- Used to Secure Fixed Inline Glass Panels Together
- Many Popular Finishes to Select From

**Description:**

## Glass Instructions

Only use tempered safety glass. To prevent damage to the hinge finish during installation, do not use power tools when

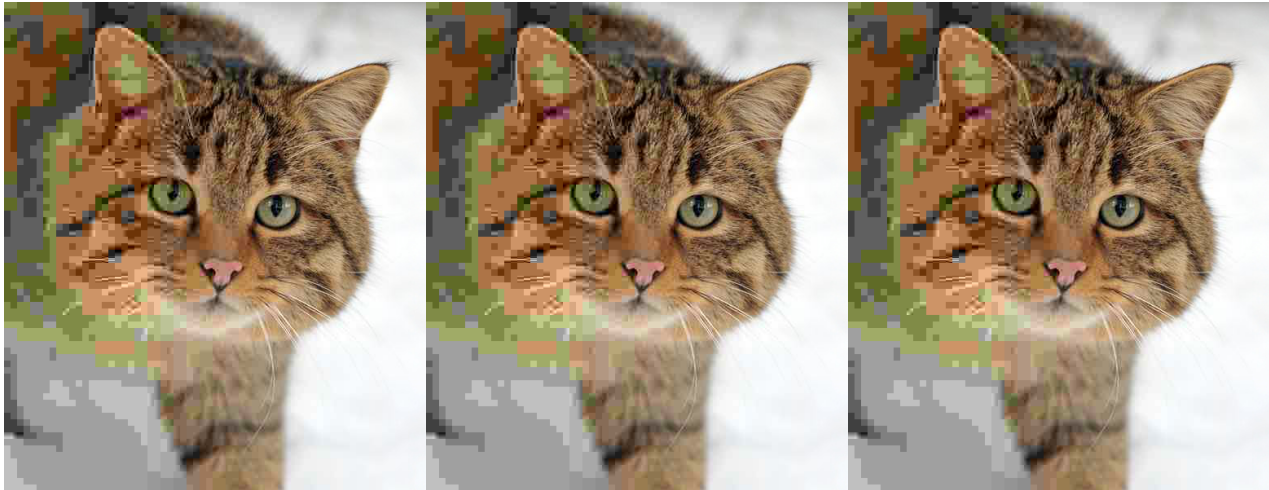
installing these hinges.

## Overview

FHC 180 Degree Glass to Glass Square Profile Clamps are designed for connecting inline fixed glass panels together. Glass fabrication may be required, reference FHC's glass fabrication template for finger notching and clearance requirements. These 180 Degree Glass to Glass Clamps have a wide range of uses outside typical shower applications. Use FHC Tru-Clear silicone to provide a water-tight seal after clamp installation.

## Care & Cleaning Guidelines

For best results, keep the following recommendations in mind when caring for your FHC shower door hardware. Your shower door should be dried daily with a soft towel or cloth to ensure its original finish. Do not use harsh cleaners or chemicals on the hardware, as many of the components are coated with a clear lacquer that will become damaged beyond repair. Always test your cleaning solution in an inconspicuous area prior to cleaning the entire hardware surface. Wipe surfaces clean using a soft, dampened cloth or sponge, and rinse completely with warm water immediately after applying the cleaning solution. Use only small amounts of liquid, gentle, cleaner. Never use abrasive products, sponges, or wire scrub brushes



ity