



# **FHC 200 Series Stock Narrow Stile Single Aluminum Door - LHR - Center Pivots**

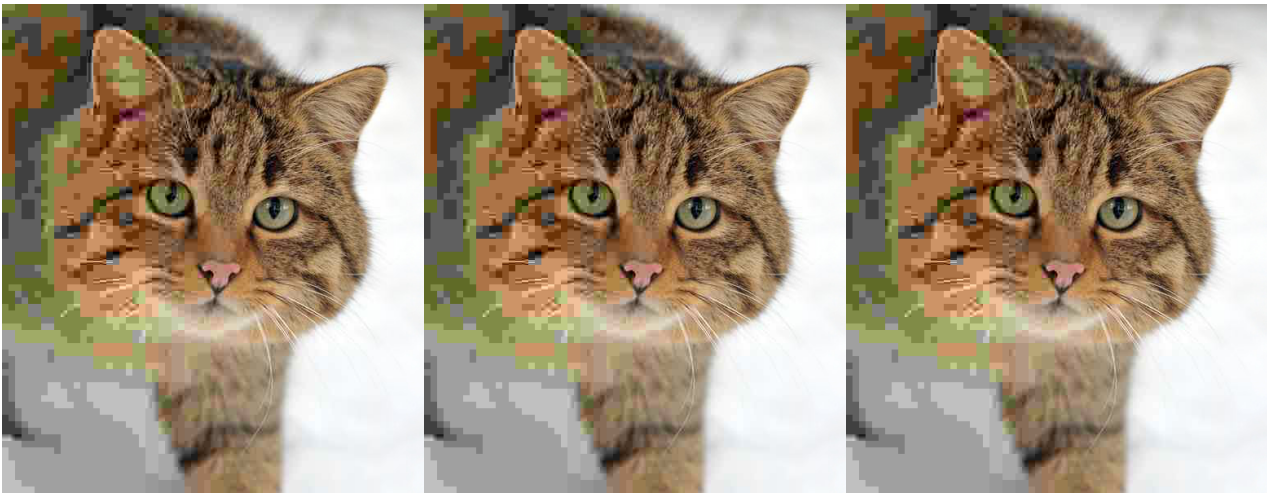
**Item No.** D2210L4C

## **Features, Advantages, and Benefits**

- FHC Aluminum Stock Narrow Stile Doors Include 2-1/4" Top and 10" Bottom Rails
- Standard Single Doors are 36" x 84"

- 1/4" Glass Stops
- Back-to-Back Push Bars and MS Lock Included
- Includes Sideload Arm Prep
- Heavy-Duty Corner Block Assembly
- Deep Penetration Welds at Door Corners
- Door Framing Components Available for All Storefront Systems
- Clear or Bronze Class 1 Anodized Material
- 2-Year Warranty

**Description:** <h2>Overview</h2><p>FHC Aluminum™ Manufactures high-performance and quality entrance systems with lead times to meet your delivery needs. FHC Aluminum™ Offers a complete line of narrow, medium, and wide stile entrance systems - including door, door frame, and hardware components. FHC



custom