



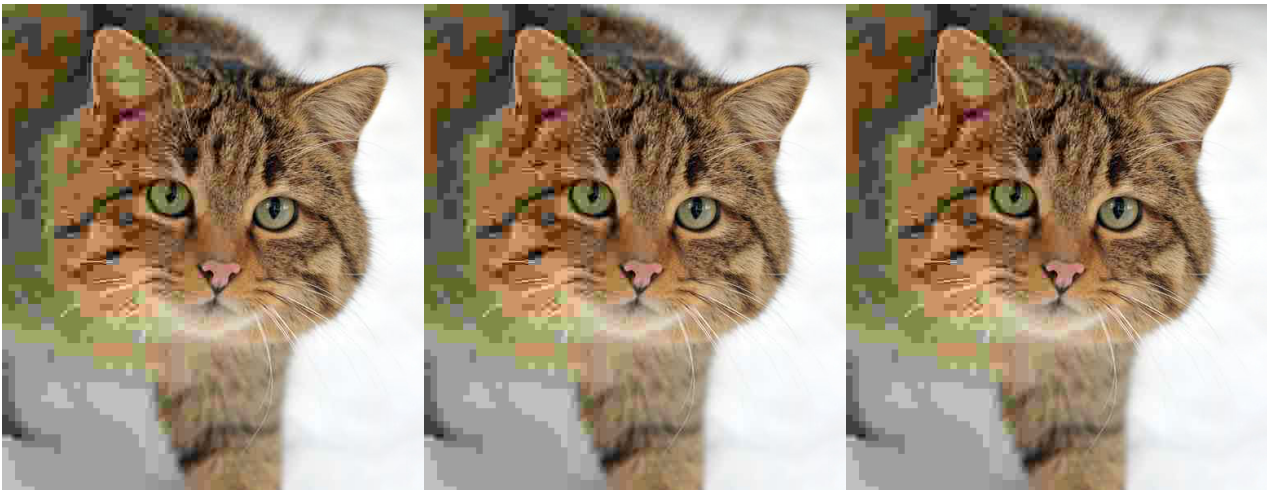
**FHC 2" x 4-1/2" Header for Pair of
Doors Prepped for Center Hung
Hardware and Concealed Vertical Rod
- No Closer Prep - Dark Bronze
Anodized - Standard Size/Hardware
Prep**

Item No. H2PC1DU

Features, Advantages, and Benefits

- FHC Aluminum Headers are Available in 1-3/4" x 4-1/2" and 2" x 4-1/2" Profiles
- For Single or Pair of Doors
- Optional Prep for Offset Pivots, Center Hung Applications or Floor Closers
- Optional Prep for Concealed Vertical Rod Panics, Flush Bolts, 3-Point Locks or Mortised Mag Locks
- Optional Prep for Offset OHCC or Overhead Stop
- Available in Standard Satin or Bronze Anodized, or Custom Kynar or Powder Paint
- Custom or Standard Sizes
- Custom or Standard Hardware Prep

Description: Overview FHC Aluminum™ Manufactures high-performance and quality entrance systems with lead times to meet your delivery needs. FHC Aluminum™ Offers a complete line of narrow, medium, and wide stile entrance systems - including door, door frame, and hardware components. FHC Aluminum™ entrance systems are A.D.A.



able