



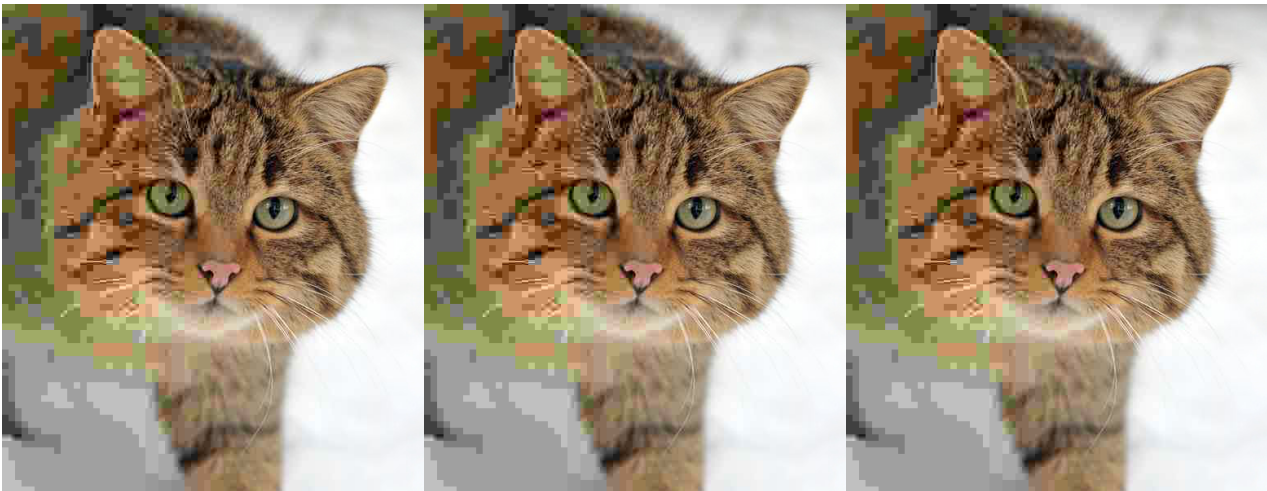
**FHC 2" x 4-1/2" Transom Frame for  
Single Doors Prepped for Butt Hinges  
and an Overhead Stop - No Threshold -  
Satin Anodized - Standard Size /  
Hardware Prep**

**Item No.** F2TSBOHSA

## Features, Advantages, and Benefits

- FHC Aluminum Frame for 200 Series Narrow Stile, 300 Series Medium Stile and 500 Series Wide Stile Doors
- Up-and-Over or Transom Frames for Single or Pairs of Doors
- Prepped for Offset Pivots, Butt Hinges or Center Hung Hardware
- Prepped for Overhead Concealed Closer or Overhead Stop
- Can Also Be Supplied without Any Hardware Prep
- Included with or without Threshold
- Standard Satin or Bronze Anodized Finishes
- Kynar and Powder Coating Available Upon Request
- Custom Size and Hardware Prep Available Upon Request

**Description:** Overview FHC Aluminum™ Manufactures high-performance and quality entrance systems with lead times to meet your delivery needs. FHC Aluminum™ Offers a complete line of narrow, medium, and wide stile entrance systems - including door, door frame, and hardware components. FHC Aluminum™ entrance systems are A.D.A.



able