



FHC Glendale Series Wall Mount Hinge - Offset Back Plate

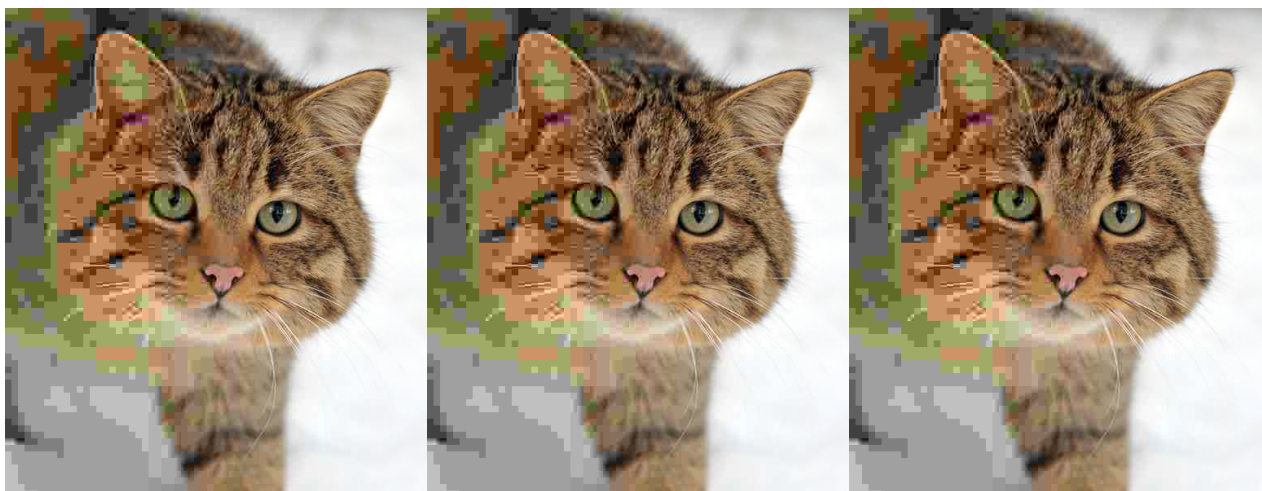
Item No. GLEN03

Features, Advantages, and Benefits

- Square Profile Glass to Wall Hinge with Offset Back Plate
- Designed For 3/8"-1/2" (10 mm to 12 mm) Tempered Glass
- Many Popular Finishes to Select From
- Self-Centering within 15 Degrees of Closing Position

- Commonly used in Residential Bath and Commercial Hotel Applications
- Reversible 5 Deg Pivot Pin For Jobs Requiring a Positive Closing Position
- Replacement Screws [PS102](#) and [PS103](#) are Available as Needed
- Can be used with Hinge Limit Plates [HLP25](#) and [HLP40](#)

Description: <h2>Glass Specifications</h2> <table style="height: 75px; width: 100%; border-collapse: collapse; border-style: double; border-color: #333333; margin-left: auto; margin-right: auto;" border="1"> <tbody> <tr style="height: 20px;"> <th style="width: 33.3333%; height: 45px; background-color: #dddfe6; text-align: center;" rowspan="2">MAXIMUM DOOR CAPACITY</th> <th style="width: 33.3333%; height: 50px; background-color: #dddfe6; text-align: center;">3/8" (10 mm) GLASS
Approx. 5 lb./ft²</th> <th style="width: 33.3333%; height: 50px; background-color: #dddfe6; text-align: center;">1/2" (12 mm) GLASS
Approx. 6.4 lb./ft²</th></tr> <tr style="height: 20px;"> <th style="width: 33.3333%; height: 30px; background-color: #dddfe6; text-align: center;">DOOR WEIGHT</th> <th style="width: 33.3333%; height: 30px; background-color: #dddfe6; text-align: center;">DOOR WIDTH</th></tr> <tr style="height: 20px;"> <td style="width: 33.3333%; height: 15px; text-align: center;">Using 2 Hinges</td> <td style="width: 33.3333%; height: 15px; text-align: center;">80 LBS (36 kg)</td> <td style="width: 33.3333%; height: 15px; text-align: center;">28" (711 mm)</td></tr> <tr style="height: 20px;"> <td style="width: 33.3333%; height: 15px; text-align: center;">Using 3 Hinges</td> <td style="width: 33.3333%; height: 15px; text-align: center;">120 LBS. (54 kg)</td> <td style="width: 33.3333%; height: 15px; text-align: center;">32" (813 mm)</td></tr> </tbody> </table> <p style="font-style:italic;



weight or