



# **FHC Carolina Beveled Wall Mount Hinge Offset Back Plate**

**Item No.** CLN02

## **Features, Advantages, and Benefits**

- HD Beveled Profile Glass to Wall Hinge with Offset Back Plate
- Designed For 3/8"-1/2" (10 mm to 12 mm) Tempered Glass
- Heavy Duty Design For Wider and Heavier Doors
- Self-Centering within 15 Degrees of Closing Position

- Commonly used in Residential Bath and Commercial Hotel Applications
- Reversible 5 Deg Pivot Pin For Jobs Requiring a Positive Closing Position
- Many Popular Finishes to Select From
- Replacement Screws [PS102](#) and [PS103](#) are Available as Needed
- Can be used with Hinge Limit Plates [HLP25](#) and [HLP40](#)

**Description:** <h2>Glass Specifications</h2> <table style="height: 75px; width: 100%; border-collapse: collapse; border-style: double; border-color: #333333; margin-left: auto; margin-right: auto;" border="1"> <tbody> <tr style="height: 20px;"> <th style="width: 33.3333%; height: 45px; background-color: #dddfe6; text-align: center;" rowspan="2">MAXIMUM DOOR CAPACITY</th> <th style="width: 33.3333%; height: 50px; background-color: #dddfe6; text-align: center;">3/8" (10 mm) GLASS <br />Approx. 5 lb./ft<sup>2</sup></th> <th style="width: 33.3333%; height: 50px; background-color: #dddfe6; text-align: center;">1/2" (12 mm) GLASS <br />Approx. 6.4 lb./ft<sup>2</sup></th></tr> <tr style="height: 20px;"> <th style="width: 33.3333%; height: 30px; background-color: #dddfe6; text-align: center;">DOOR WEIGHT</th> <th style="width: 33.3333%; height: 30px; background-color: #dddfe6; text-align: center;">DOOR WIDTH</th></tr> <tr style="height: 20px;"> <td style="width: 33.3333%; height: 15px; text-align: center;">Using 2 Hinges</td> <td style="width: 33.3333%; height: 15px; text-align: center;">110 LBS (50 kg)</td> <td style="width: 33.3333%; height: 15px; text-align: center;">36" (914 mm)</td></tr> <tr style="height: 20px;"> <td style="width: 33.3333%; height: 15px; text-align: center;">Using 3 Hinges</td> <td style="width: 33.3333%; height: 15px; text-align: center;">140 LBS. (64 kg)</td> <td style="width: 33.3333%; height: 15px; text-align: center;">36" (914 mm)</td></tr></tbody></table>

<p style="font-style:italic; font-size:12px;"><strong>NOTE: </strong> Do Not Exceed either maximum weight or width when choosing proper quantity of hinges.</p>

<h2>Gasket Specifications</h2><p>For 3/8" (10 mm) Glass: Use One Thick Gasket On Each Side<br>For 1/2" (12 mm) Glass: Use One Thin Gasket On Each Side</p>

<h2>Glass Instructions</h2><p>Only use tempered safety glass. To prevent damage to the hinge finish during installation, do not use power tools when installing these hinges.</p>

<h2>Overview</h2><p>The Carolina Series Hinge has a dual degree pivot pin. It comes factory set at 90 degrees for normal door closing applications. There is also a secondary setting on the hinge pivot pin that can be field adjusted to allow an additional 5 degrees of closing for jobs that require a firmer positive position against a jamb or seal.</p>

<h2>Care & Cleaning Guidelines</h2><p>For best results, keep the following recommendations in mind when caring for your FHC shower door hardware. Your shower door should be dried daily with a soft towel or cloth to ensure its original finish. Do not use harsh cleaners or chemicals on the hardware, as many of the components are coated with a clear lacquer that will become damaged beyond repair. Always test your cleaning solution in an inconspicuous area prior to cleaning the entire hardware surface. Wipe surfaces clean using a soft, dampened cloth or

sponge, and rinse completely with warm water immediately after applying the cleaning solution. Use only small amounts of liquid, gentle, cleaner. Never use abrasive products, sponges, or wire scrub brushes while cleaning

hardware.

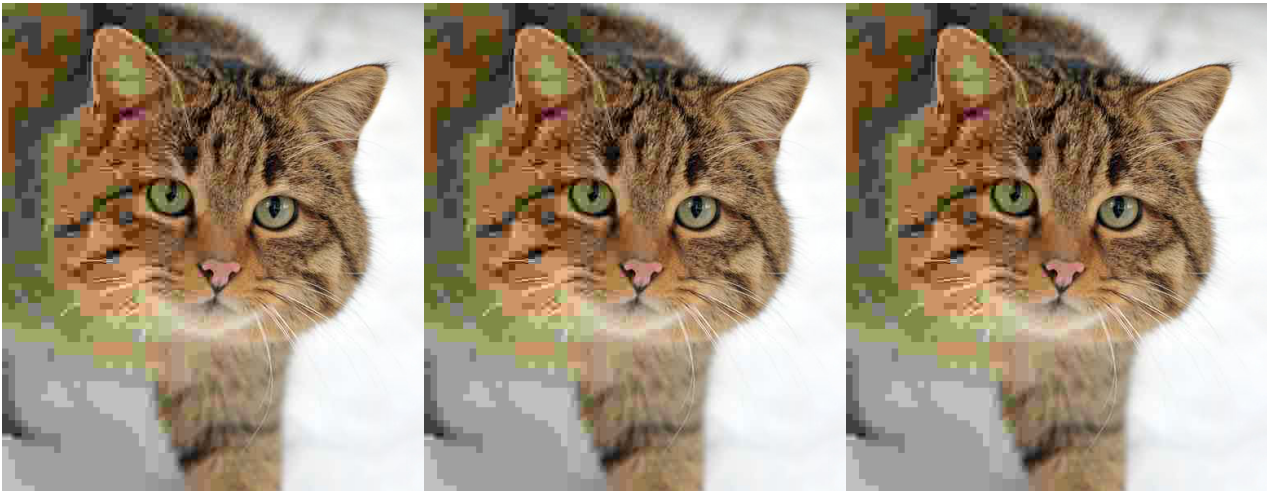
## Maintenance

FHC's hinges come factory greased for a silent, hassle-free experience. If there is any noticeable squeaking that occurs after installation it is recommended to apply a few drops of (3 in 1) multi-purpose oil to the hinge, at the nylon washer/pivot location. The lubricant will penetrate the hinge crevices, reducing friction, cleaning grime, and/or buildup. Spray lubricants are prohibited. If, for some reason, the hinge is disassembled during maintenance, use a small amount of white lithium grease to lubricate the interior hinge

## Material/Construction

Solid Brass with HD S/S Back Plate

\* Always wear the correct safety gear to protect yourself. Failure to do



ny