



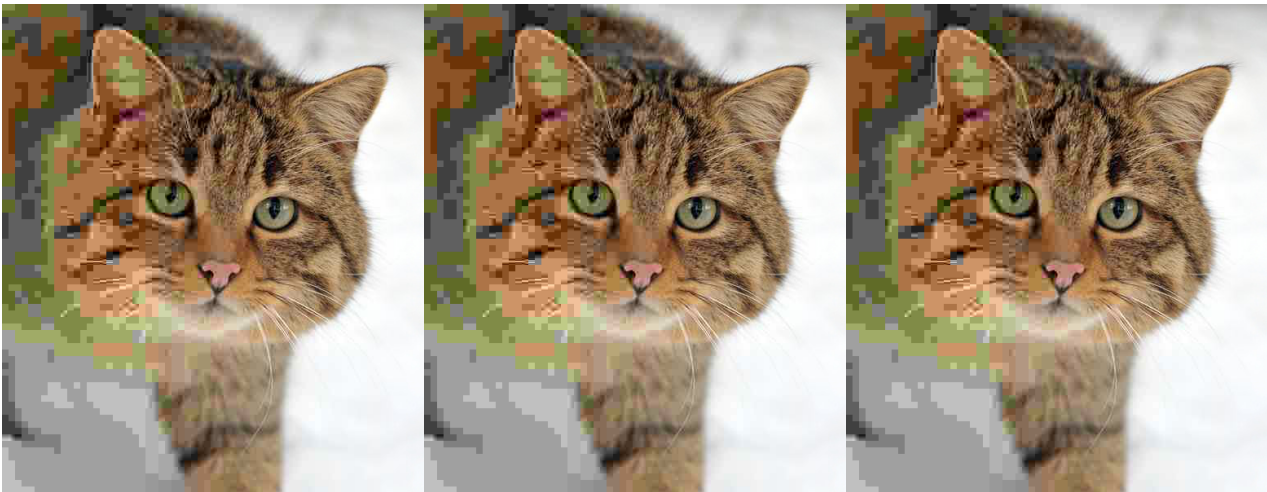
FHC 6" Square Door Rail 35-3/4" With Lock

Item No. R6SL

Features, Advantages, and Benefits

- US Patent No. 11,060,341 Other Patents Pending
- Easiest and Fastest Rail to Install in the Industry
- New Modern Crisp Corner Design
- For 1/2" Monolithic Tempered Glass

- Class 1 Anodizing UV Stable Finishes That Will Not Fade
- New Improved Pivot Alignment System "PAS" Included With Each Rail
- Increased Glass Bite Improves Holding Strength and Aesthetics
- Solid One Piece Aluminum Housing
- State of the Art Solid Forged Brass Plated End Caps With Premium Finishes
- New Innovative Anti-Clamshell Pad End Cap
- Available With or Without Lock
- Available In a Wide Range of Architectural Finishes
- Comes With Standard **Item No. [R777S](#)** Lock Installed
- Use with **Item No. [RCT1](#)**



ble span