



## **FHC Roll Formed Cap Rail 2" Square**

**Item No.** SC20

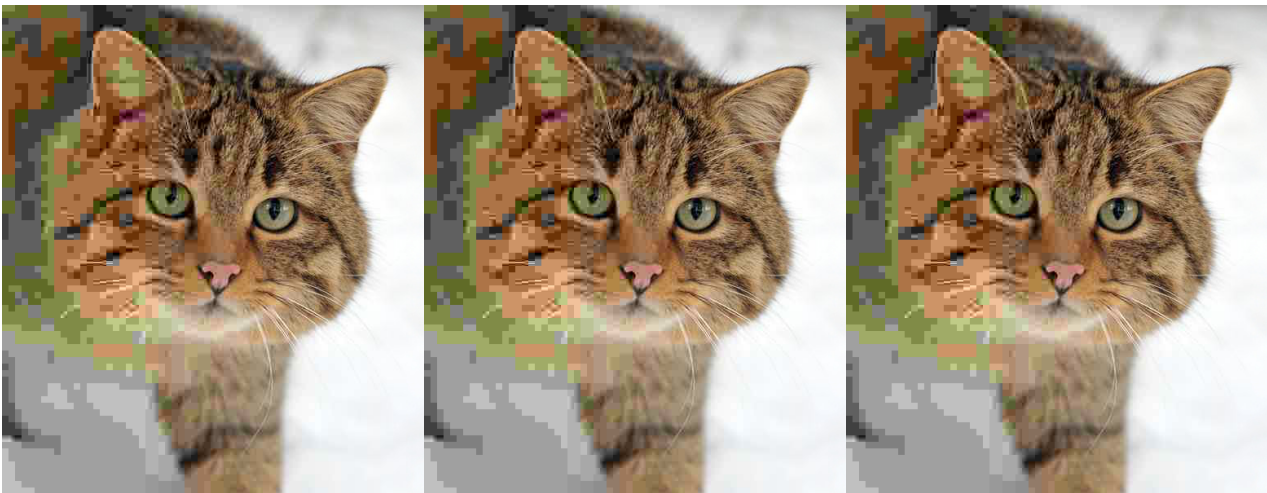
### **Features, Advantages, and Benefits**

- 2" Square Profile
- For 1/2", 9/16", 11/16", 3/4" or 13/16" Glass
- 19' 1" Stock Lengths
- 316 Alloy
- Available in Two Architectural Finishes, Plus Powder Coat
- Rubber Gasket, End Caps, Corners and Sleeves Sold Separately

- Custom Fabrication Available, Contact FHC Technical Sales for More Information

When Installed in Accordance with ICC-ESR4814, the Achieve Frameless Glass Railing System is compliant with:

- 2021 and 2018 International Building Code® (IBC)
- 2021 and 2018 Residential Building Code® (IBC)
- 2020 City of Los Angeles Building Code® (LABC)
- 2020 City of Los Angeles Residential Code® (LARC)
- 2019 California Building Code® (CBC)
- 2019 California Residential Code® (CRC)



ble span