



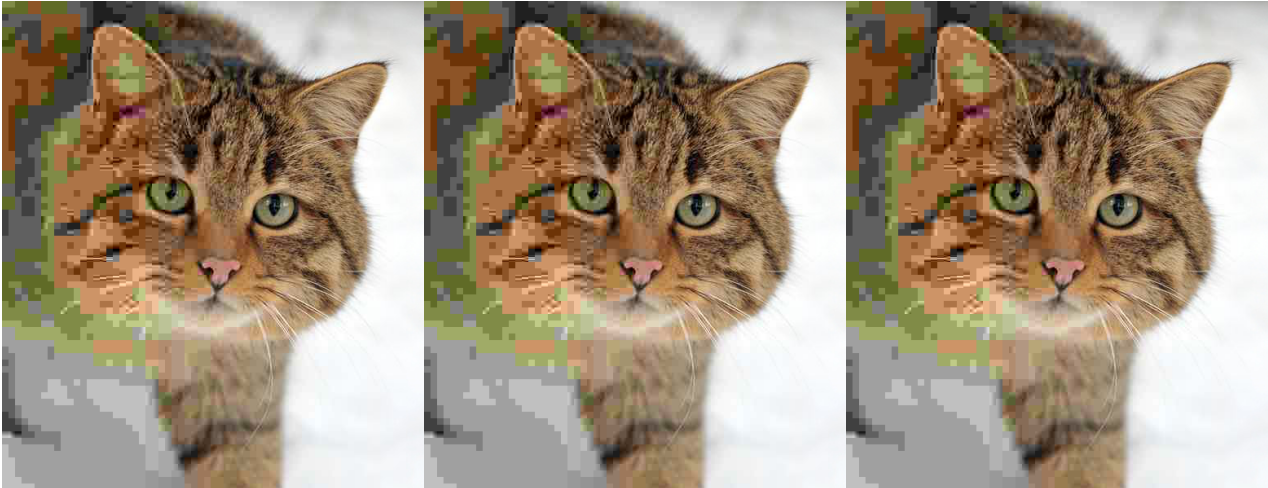
FHC Glass Rail Standoff Base and Cap - 2" x 1-3/4"

Item No. RS2X134

Features, Advantages, and Benefits

- Standoff Base and Cap for Guard or Hand Railings
- Includes Cap, Base and Stud for Mounting
- 2" Diameter, 1-3/4" Long
- Use With 1/2" to 13/16" Tempered Monolithic or Tempered Laminated Glass

- Mounts to Steel, Concrete or Wood Substrates
- Requires (1) 3/4" Diameter Hole Per Standoff



ble span