



FHC Carolina Beveled 5 Degree Positive Close Glass To Glass 135 Degree Hinge

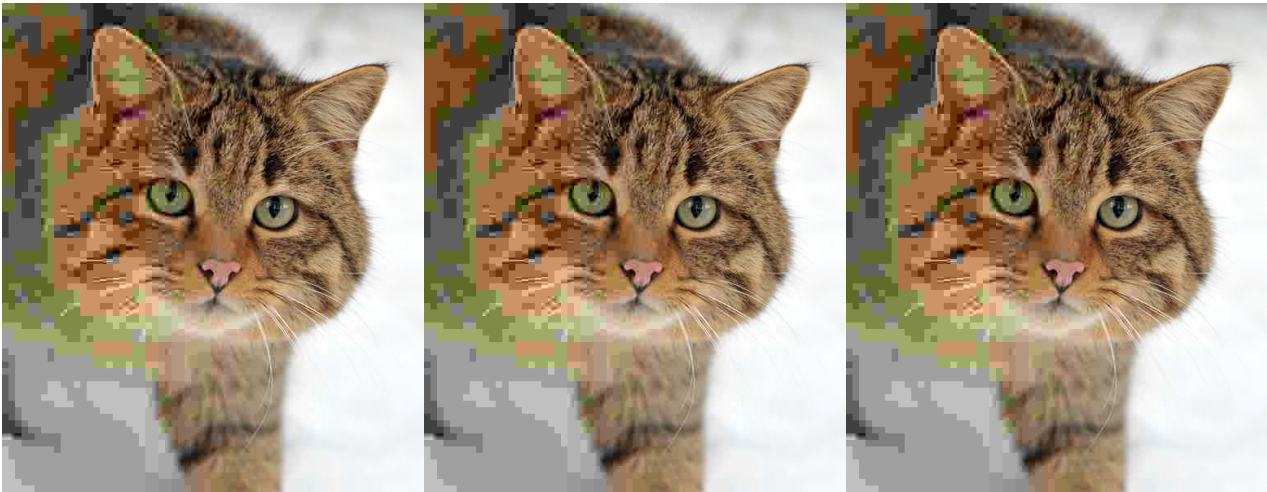
Item No. CLN535

Features, Advantages, and Benefits

- For 3/8" or 1/2" Tempered Glass
- Used in 135 Degree Glass to Glass Applications

- Beveled Edges and Corners
- Solid Brass Construction
- Easily Converts to 5 Degree Offset

Description: <h2>Glass Specifications</h2> <table style="height: 75px; width: 100%; border-collapse: collapse; border-style: double; border-color: #333333; margin-left: auto; margin-right: auto;" border="1"> <tbody> <tr style="height: 20px;"> <th style="width: 33.3333%; height: 45px; background-color: #dddfe6; text-align: center;" rowspan="2">MAXIMUM DOOR CAPACITY</th> <th style="width: 33.3333%; height: 50px; background-color: #dddfe6; text-align: center;">3/8" (10 mm) GLASS
Approx. 5 lb./ft²</th> <th style="width: 33.3333%; height: 50px; background-color: #dddfe6; text-align: center;">1/2" (12 mm) GLASS
Approx. 6.4 lb./ft²</th> </tr> <tr style="height: 20px;"> <th style="width: 33.3333%; height: 30px; background-color: #dddfe6; text-align: center;">DOOR WEIGHT</th> <th style="width: 33.3333%; height: 30px; background-color: #dddfe6; text-align: center;">DOOR WIDTH</th> </tr> <tr style="height: 20px;"> <td style="width: 33.3333%; height: 15px; text-align: center;">Using 2 Hinges</td> <td style="width: 33.3333%; height: 15px; text-align: center;">110 LBS (50 kg)</td> <td style="width: 33.3333%; height: 15px; text-align: center;">36" (914 mm)</td> </tr> <tr style="height: 20px;"> <td style="width: 33.3333%; height: 15px; text-align: center;">Using 3 Hinges</td> <td style="width: 33.3333%; height: 15px; text-align: center;">



xt-align: