



# **FHC Venice Square 5 Degree Positive Close Offset Short Back Plate Wall Mount Hinge**

**Item No.** VENS05

## **Features, Advantages, and Benefits**

- Offset Short Back Plate Allows for More Field Adjustment
- Slip Fit Design Allows for Fast Hinge Installation

- Allows for "Tighter" Glass Gap at Hinge Side for Fast Hinge Installation
- Designed For 3/8"-1/2" (10 mm to 12 mm) Tempered Glass
- Heavy Duty Design For Wider and Heavier Doors
- Self-Centering within 15 Degrees of Closing Position
- Commonly used in Residential Bath and Commercial Hotel Applications
- Reversible 5 Deg Pivot Pin For Jobs Requiring a Positive Closing Position
- Many Popular Finishes to Select From
- Includes (4) Durable, Industry Standard Size Phillips Head Mounting Screws Plated 304 Grade S/S Construction
- Replacement Screws [PS102](#) and [PS103](#) are Available as Needed
- Can be used with Hinge Limit Plates [HLP25](#) and [HLP40](#)

**Description:**

## Glass Specifications

MAXIMUM DOOR CAPACITY	3/8" (10 mm) GLASS	Approx. 5 lb./ft <sup>2</sup>
1/2" (12 mm) GLASS	Approx. 6.4 lb./ft <sup>2</sup>	
DOOR WEIGHT	DOOR WIDTH	
Using 2 Hinges	110 LBS (50 kg)	36" (914 mm)
Using 3 Hinges	140 LBS. (64 kg)	36" (914 mm)

**NOTE:** Do Not Exceed either maximum weight or width when choosing proper quantity of hinges.

## Gasket Specifications

For 3/8" (10 mm) Glass: Use One Thick Gasket On Each Side. For 1/2" (12 mm)

Glass: Use One Thin Gasket On Each Side

## Glass Instructions

Only use tempered safety glass. To prevent damage to the hinge finish during installation,

do not use power tools when installing these hinges.

## Overview

The Venice Series Hinge has a dual degree pivot pin. It comes factory set at 90

degrees for normal door closing applications. There is also a secondary setting on the

hinge pivot pin that can be field adjusted to allow an additional 5 degrees of closing for

jobs that require a firmer positive position against a jamb or seal.

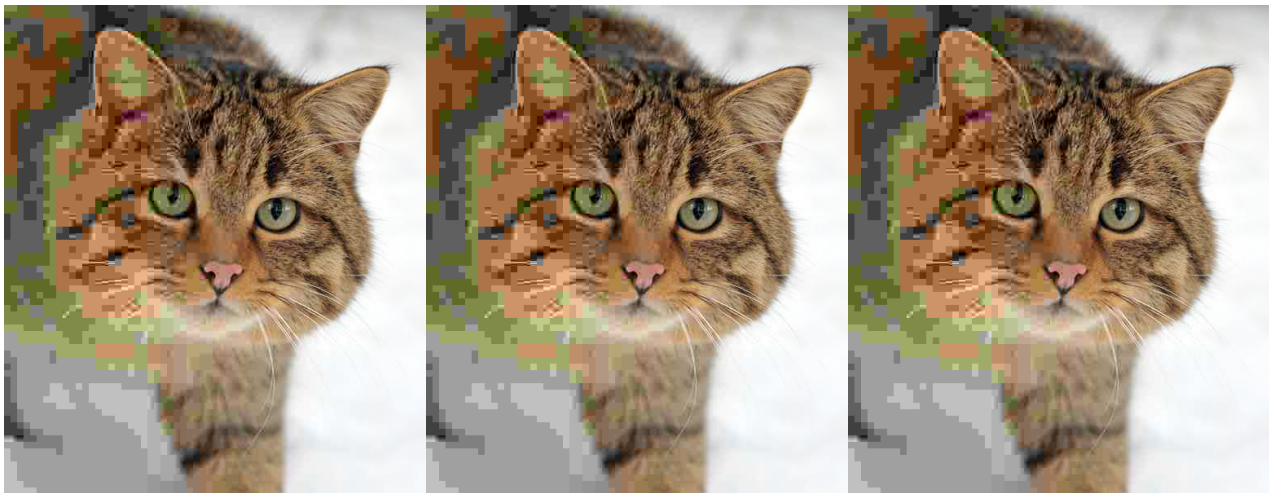
## Care & Cleaning Guidelines

For best results, keep the following recommendations

in mind when caring for your FHC shower door hardware. Your shower door should be dried daily with a soft towel or cloth to ensure its original finish. Do not use harsh cleaners or chemicals on the hardware, as many of the components are coated with a clear lacquer that will become damaged beyond repair. Always test your cleaning solution in an inconspicuous area prior to cleaning the entire hardware surface. Wipe surfaces clean using a soft, dampened cloth or sponge, and rinse completely with warm water immediately after applying the cleaning solution. Use only small amounts of liquid, gentle, cleaner. Never use abrasive products, sponges, or wire scrub brushes while cleaning hardware.

## Maintenance

FHC's hinges come factory greased for a silent, hassle-free experience. If there is any noticeable squeaking that occurs after installation it is recommended to apply a few drops of (3 in 1) multi-purpose oil to the hinge, at the nylon washer/pivot location. The lubricant will penetrate the hinge crevices, reducing friction, cleaning grime, and/or buildup. Spray lubricants are prohibited. If, for some reason, the hinge is disassembled during maintenance, use a small amount of white lithium grease to lubricate the interior



h HD S/S